

REAL TIME DIGITAL TWINNING: A REVOLUTION IN MONITORING AND CONTROL



LINK

“LINK Digital Twinning is the world’s most advanced and complete system for managing all your vessel needs.”

CONTENTS

INTRODUCTION	03
ECOSYSTEM	08
MONITORING	10
CONTROL	16
SECURITY	20
SUPPORT	24
HARDWARE	28



THE FUTURE STARTS HERE

LINK represents the future of digitally twinned yachting. With advanced monitoring, control and diagnostics, LINK allows you to oversee your vessel(s) from anywhere in the world.

Developed by global leaders in smart control and integration technology, LINK sets the benchmark for real-time digital twinning in the marine industry. Designed in collaboration with leading UK boat builders and international vessel operators, LINK combines unrivalled functionality with exceptional performance.

LINK provides seamless control and visibility of all onboard systems, including engine data, batteries, tanks, positioning, security, climate, and more.

Whether you want to adjust the lighting from your phone, free up your crew's time, enhance operational efficiency or ensure your vessel operates flawlessly, LINK takes care of the hard work for you.



A VOYAGE OF INNOVATION

The team behind LINK has been at the forefront of smart technologies from the very beginning. Pioneering the evolution of connected spaces over the past decade, we have established a global reputation for delivering advanced, reliable, and user-friendly integration solutions.

Our multi-award-winning journey began with creating premium technology experiences for homes, hotels and yachts. Building on this foundation, we have developed control integrations for many leading global brands. Today, our cloud-based solutions are trusted in tens of thousands of locations worldwide.

Created in response to the marine industry's growing demand for digital twinning solutions, LINK provides crews and management teams with complete visibility and control over all onboard systems, as if they were always on board. Meticulously designed and developed in the UK by a passionate and experienced team, LINK combines a heritage in smart technologies, expertise in the marine sector and cutting-edge cloud solutions into one revolutionary digital twinning ecosystem.

MAKE THE MOST OF YOUR VESSEL

Every element of the LINK platform has been carefully designed to ensure you get the most out of your vessel. With LINK onboard you can have a new unparalleled level of oversight and control. It's as simple as that.

Designed to keep you running.

LINK acts as a 24-hour engineer, constantly monitoring multiple systems across your vessel so you do not have to. With your authorisation, remote maintenance teams can proactively monitor your vessel in real time, ensuring that every system is optimised and functioning flawlessly whenever it is needed.

Simplify control.

LINK delivers effortless control, designed to be simple and intuitive. With a consistent interface across devices, it puts your vessel's systems in the palm of your hand. Remotely turn on the underwater lights from a beach picnic, adjust the shades in your cabin or switch off the AC—control is always at your fingertips.

Free up the crew.

LINK works for the crew, enabling them to focus on serving the vessel more effectively. In addition to providing complete monitoring and control from the helm or through smartphone apps, LINK streamlines tasks to lighten the crew's workload. With features such as diagnostic tools, fuel usage reporting and documentation management, LINK becomes an indispensable part of the team



REMOTE AND LOCAL MONITORING.

Monitor all your onboard devices (marine, network IP and AV) locally and from anywhere in the world.



REMOTE AND LOCAL CONTROL.

Live two-way control of your onboard devices and equipment, both locally and from anywhere in the world.



INSTANT ALERTS AND NOTIFICATIONS.

LINK sends alerts and status updates to all your chosen devices by email, SMS or WhatsApp, and can also notify your crew if required.



EXPANSIVE INTEGRATION PORTFOLIO.

LINK Supports integration with all onboard protocols, including NMEA, KNX, Böning, and C-Zone.



COMPREHENSIVE FLEET MANAGEMENT.

Full fleet management capabilities to manage all your vessels in one place. LINK corporate cloud is also available for boatbuilders and dealers.

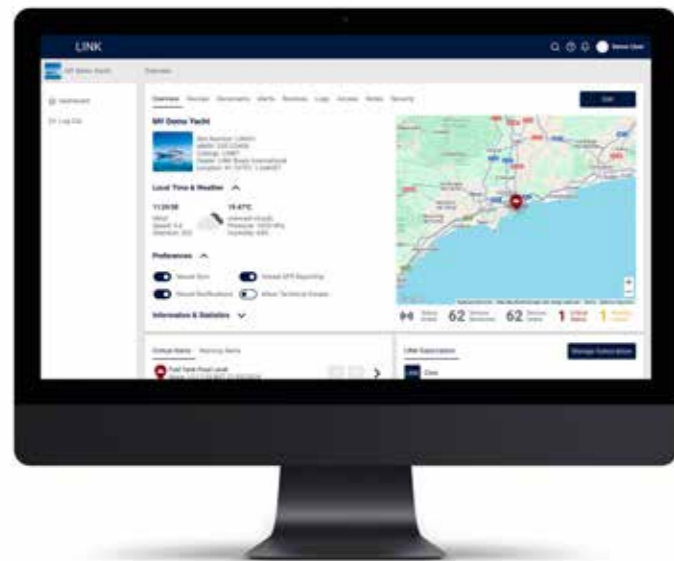


COMPLETE SMART HOME INTEGRATION.

LINK is easy to integrate with your existing smart home system, including Crestron, Control4, Elan, Savant, and RTI

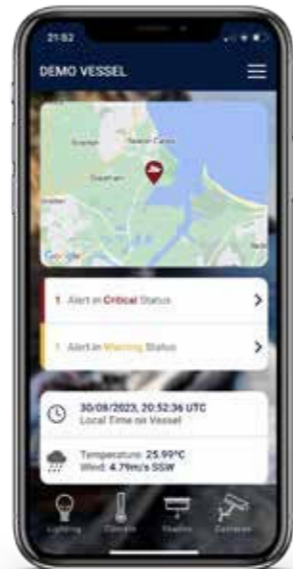
LINK ECOSYSTEM

The core design philosophy of LINK is to deliver an all-encompassing digital twinning ecosystem for managing every aspect of your vessel. It provides a single platform for you, your crew, and support providers to monitor systems, control devices, access documentation, and enable technical access for service teams; all seamlessly integrated within LINK.



LINKcloud.

The central management hub and your portal to your digitally twinned vessel. LINKcloud connects all your vessels, crew, dealers and maintenance providers. Feature-rich and fully secure, it offers comprehensive monitoring and control, along with collaborative tools such as electronic document storage. Designed to be flexible and adaptive, LINKcloud is ideal for managing a single vessel or an entire fleet.



LINKapp.

Your vessel, right in the palm of your hand. Available for both Apple and Android devices, LINKapp provides simple and user-friendly control of domotics, vessel monitoring and smart devices. Personalise your experience by setting your preferences, including the alerts you wish to receive. Effortlessly switch between light and dark mode to suit your environment.



LINKdisplay app.

Unlock the full potential of LINK with our intuitive apps for the leading brands of onboard multifunction displays. Developed with captains and crew, LINKdisplay brings extended data insights to the bridge without the need to rearrange existing systems. It seamlessly integrates new information, providing full monitoring, control and alerts to keep your crew informed.



LINKbridge.

Custom-designed hardware crafted in the UK to deliver maximum connectivity and control options. This advanced technology is simple to install and retrofit. LINKbridge seamlessly integrates all systems on your vessel, ensuring you remain connected even without internet connectivity when on board. When internet connectivity is available, remote access allows you to monitor and control your vessel from anywhere.

LINK DIGITAL TWINNING

LINK provides you and your crew with full remote visibility, just as though you were on board.

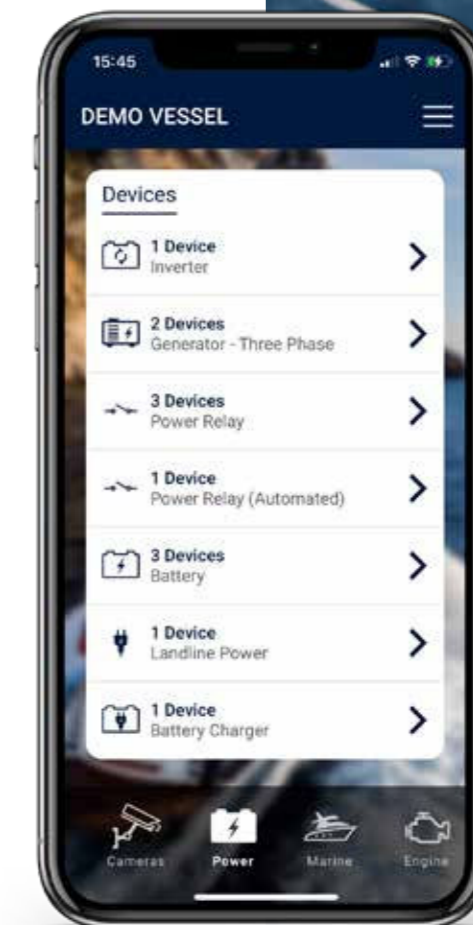


Advanced twinning technology.

Providing complete visibility of your vessel, LINK ensures you, your crew, or your service providers have all the information required to keep your vessel in optimum condition. LINK collects data from more systems than any other product on the market to allow you to monitor everything on your vessel in one place.

Use real-time information to oversee critical devices on your vessel such as engines, generators, bilge, batteries, and tank levels and ensure they're functioning correctly. View data from instrumentation, including navigation panels, AIS, depth sounders, weather, and environmental systems, so you're always aware of the external conditions of your vessel.

Going beyond monitoring the marine devices onboard your vessel, LINK allows you to view interior systems, including lighting, shades, climate, music, and AV. LINK is completely unrestricted. View every property of every connected device with comprehensive search and filtering capabilities.



Unrivalled alert functionality.

LINK's advanced alert technology offers unmatched customisation, ensuring you are always informed about the state of your onboard devices.

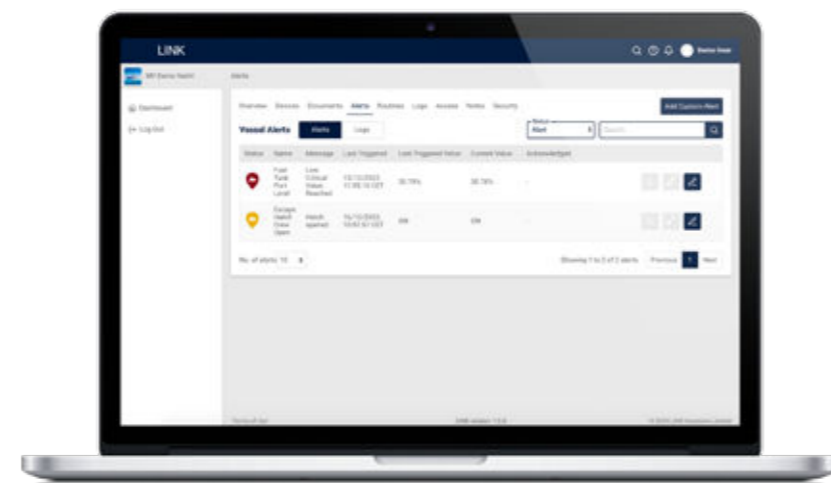
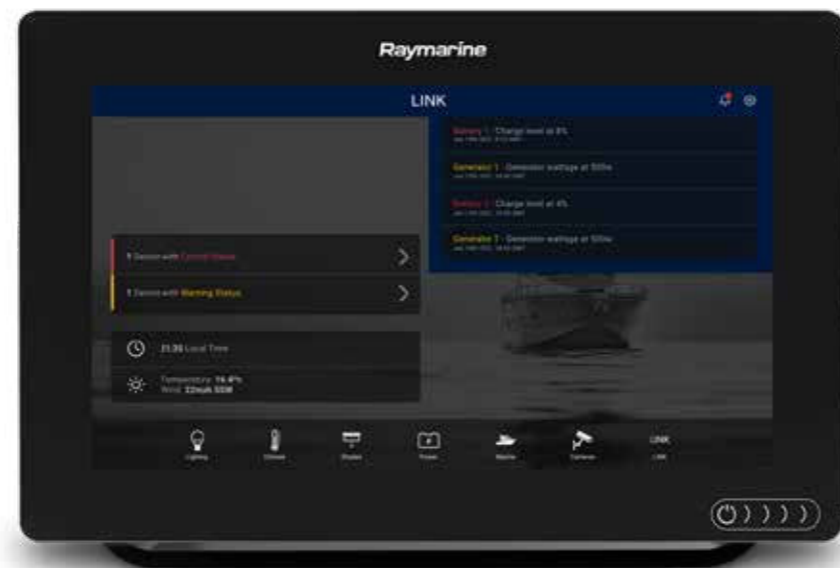
Receive automatic critical and warning alerts, along with informative notifications from NMEA devices. For instance, you will be notified if oil pressure is low or if your AC system requires servicing.

LINK also enables the creation of custom alerts that are not limited to NMEA devices. Use real-time data to trigger alerts for any value of any device. Customise alerts to activate based on a single condition or a combination of conditions, giving you complete oversight of your vessel. For example, create an alert that

notifies you if your battery levels are low and shore power is not connected, ensuring power usage remains within safe limits.

Alerts can also be extended into routines, automating actions when specific conditions are met. For instance, ensure batteries stay topped up by creating a routine to start the generator and battery charger if battery levels fall below a set threshold.

These alerts and routines integrate seamlessly with LINK's advanced notification system, so the correct people are informed for each situation, giving you peace of mind and keeping operations smooth.



Stay informed.

Everyone communicates differently, which is why LINK offers the flexibility to receive notifications via WhatsApp, SMS, email, the LINK app, or the desktop cloud.

Each user can customise their preferences, choosing which notifications to receive based on specific vessels, devices, alerts, or routines. Staying fully informed about your vessel has never been easier.

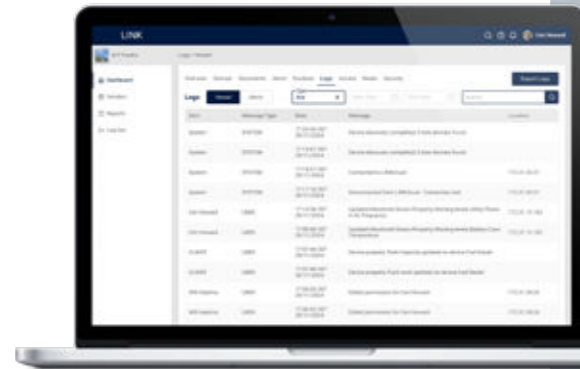


Know your history.

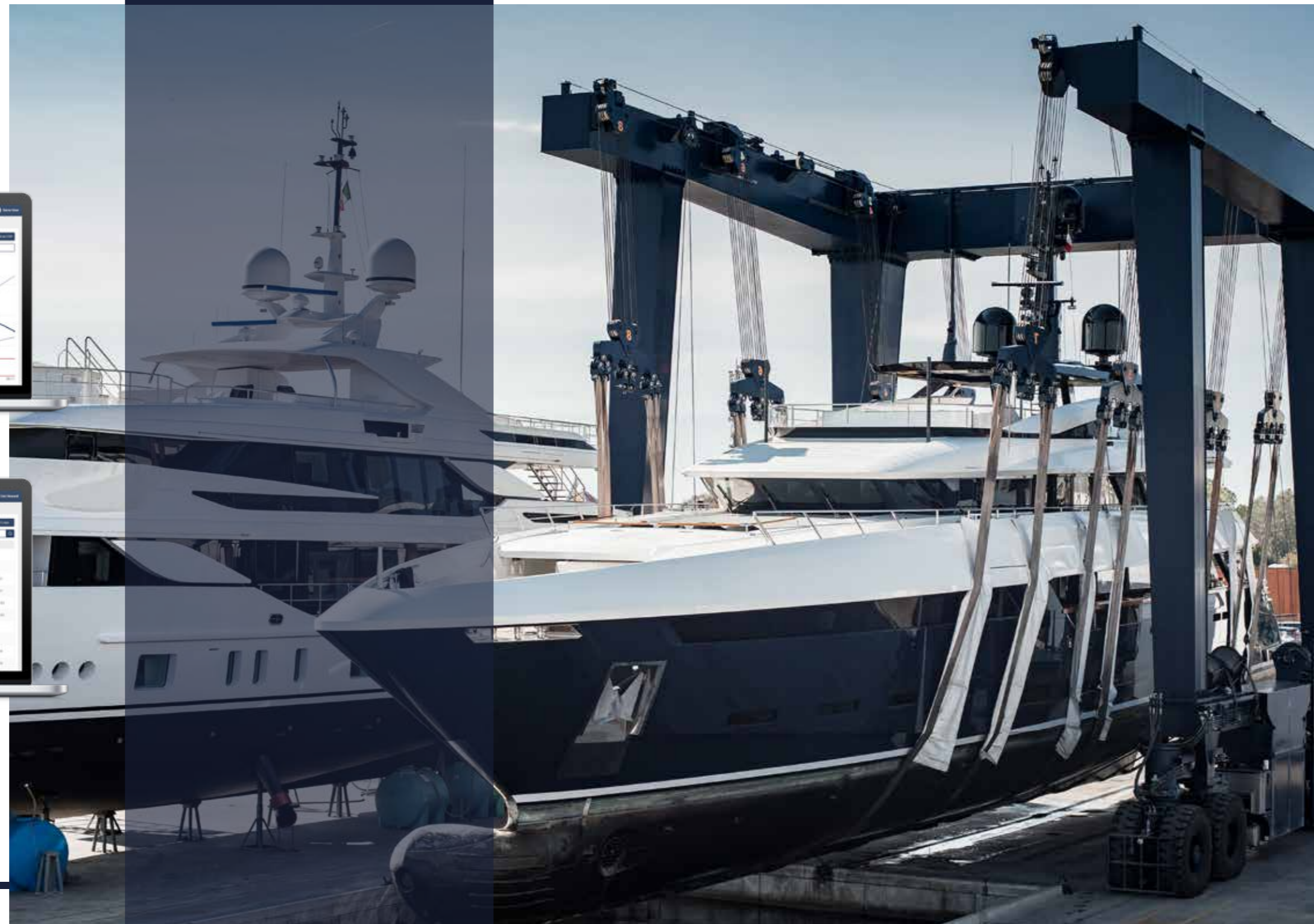
Comprehensive logging gives you access to both historical and real-time data for all your devices, providing invaluable insights into their performance over time. Use this information to monitor trends, diagnose faults, or enable your support team to identify potential issues before they occur.

Logged data is easily accessible through live graphs on your LINK dashboard or via the LINK app when you are on the go. For external analysis, raw data can be exported as a CSV file. LINK retains up to 90 days of logged values for any property of any connected device on your vessel, ensuring you always have the information you need.

LINK's powerful reporting suite helps you and your crew make the most of these logged values. For example, if you need insights from your last voyage, simply generate a report showing the route taken and the total fuel consumption for the trip.

A laptop displaying the LINK dashboard with a table of logged data. The table has columns for 'Date', 'Time', 'Value', and 'Unit'. The data is organized into a grid with alternating row colors (white and light blue).

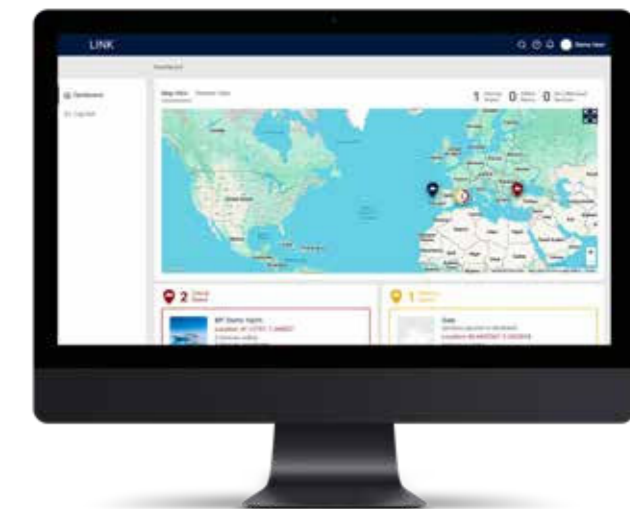
Date	Time	Value	Unit
2023-10-26	10:00:00	100.0	rpm
2023-10-26	10:05:00	105.0	rpm
2023-10-26	10:10:00	110.0	rpm
2023-10-26	10:15:00	115.0	rpm
2023-10-26	10:20:00	120.0	rpm
2023-10-26	10:25:00	125.0	rpm
2023-10-26	10:30:00	130.0	rpm
2023-10-26	10:35:00	135.0	rpm
2023-10-26	10:40:00	140.0	rpm
2023-10-26	10:45:00	145.0	rpm
2023-10-26	10:50:00	150.0	rpm
2023-10-26	10:55:00	155.0	rpm
2023-10-26	11:00:00	160.0	rpm
2023-10-26	11:05:00	165.0	rpm
2023-10-26	11:10:00	170.0	rpm
2023-10-26	11:15:00	175.0	rpm
2023-10-26	11:20:00	180.0	rpm
2023-10-26	11:25:00	185.0	rpm
2023-10-26	11:30:00	190.0	rpm
2023-10-26	11:35:00	195.0	rpm
2023-10-26	11:40:00	200.0	rpm
2023-10-26	11:45:00	205.0	rpm
2023-10-26	11:50:00	210.0	rpm
2023-10-26	11:55:00	215.0	rpm
2023-10-26	12:00:00	220.0	rpm



See it your way.

Manage vessels effortlessly with LINK's adaptive interfaces. Customise the LINKcloud dashboard and smartphone app to display only the most relevant information for each vessel.

LINK's intuitive design ensures all features are fully tailored to the needs of each vessel user. Captains and crew can access detailed technical information, while engineers benefit from an advanced view. Guests are presented with a clean interface, offering control over lighting and shades. LINK adapts seamlessly to the requirements of the vessel and its users, providing a personalised experience for every role on board.



Fleet view.

LINK simplifies the management of multiple vessels, providing a global overview on a single screen, including location and operational status. The system ensures quick and clear insight into whether everything is functioning as expected.

Vessels can be viewed on a map or in a list format, with the option to filter by status for efficient monitoring. LINK's advanced search functionality allows for instant access to a specific vessel. Each vessel is equipped with its own dashboard, displaying detailed, vessel-specific information, such as location, operational status, and monitored devices.

LINK CONTROL

LINK provides powerful control functionality for vessels. Uniquely, LINK enables direct control over multiple systems, allowing seamless management both onboard and onshore.

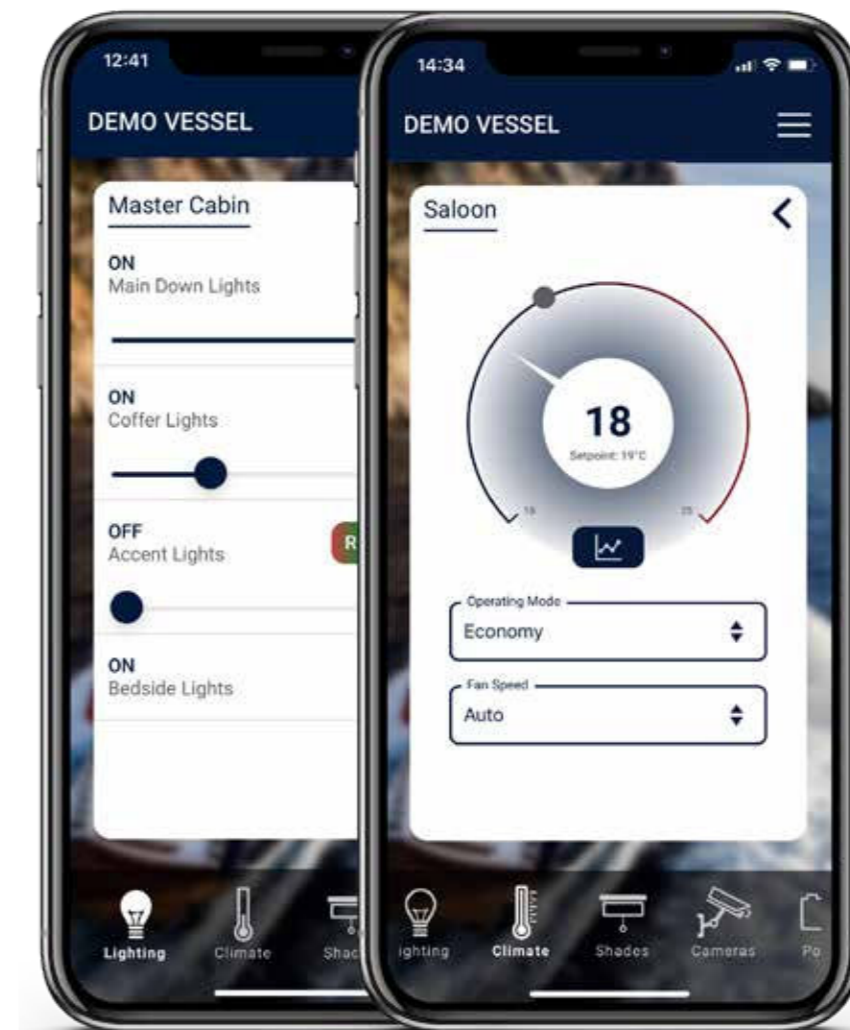


Direct control.

LINK offers unrivalled control of vessels, going far beyond simple digital switching. Instead of merely turning devices on or off, LINK provides direct control over device properties. Adjust light levels, change the operating mode of a generator (where supported), or set the temperature of an AC system. Whatever controls a device has, they are accessible within LINK.

LINK scenes further simplify vessel control. Adjust lighting and shades across the vessel to the perfect level for relaxation by activating 'evening mode' or ensure everything is powered down with an 'all off mode' before leaving. These scenes are fully customisable, allowing control of multiple systems at the touch of a button.

LINK also enables seamless monitoring and control of critical systems remotely. Adjust watermaker settings while underway or activate a bilge pump if a sensor detects water ingress. Whether preparing a vessel for arrival or managing systems while at sea, LINK ensures comprehensive, direct control is always within reach.



Automated routines.

LINK routines are designed to automate as many vessel operations as possible.

For example, if battery levels drop, LINK can automatically activate the battery chargers based on predefined thresholds, ensuring batteries remain protected and fully charged. This eliminates the risk of batteries going flat or sustaining damage.

Routines are fully customisable and can utilise any property of any connected device. Alerts or notifications can be configured to trigger whenever a routine is activated, using LINK's advanced notification system to keep the crew informed of the vessel's status at all times.



Simple View.

LINK is an incredibly powerful platform, designed to deliver clear and actionable information for controlling onboard devices while providing the full depth of technical data when required, locally or remotely.

On a busy vessel, having the right information readily available is essential without being overwhelmed by excessive technical details. Tasks such as turning on a light, stopping a generator, or activating a bilge pump do not require complex data streams, yet such information remains critical for diagnostics and maintenance. LINK bridges this gap seamlessly, offering both simplicity and detailed insights.

LINKcloud's Simple View consolidates raw data into clear and intuitive controls. Instead of multiple technical parameters, Simple View provides straightforward summaries such as battery status or tank levels, streamlining vessel operations. At the same time, detailed data remains accessible for engineers or maintenance teams handling diagnostics or troubleshooting.

With a consistent layout across LINK's smartphone and display apps, Simple View ensures effortless navigation and control. Whether systems are managed from the helm or remotely, LINK delivers information precisely when it is required.



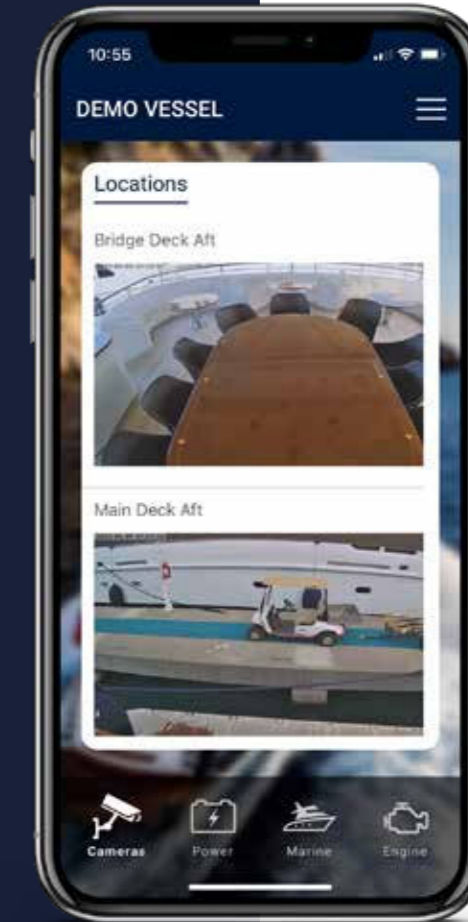
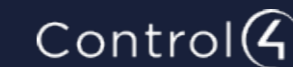
Intuitively connected.

LINK offers a comprehensive suite of integration solutions, making the connection between marine systems and smart home functionality seamless.

Integrating marine systems with smart home and AV systems has long been a challenge. LINK simplifies this process with its powerful LINK Control API, which includes integrations for all major smart home platforms, such as Control4, Crestron, ELAN, RTI and Savant.

With LINK, technology integrators no longer need to invest significant time developing custom integrations for vessels. In many cases, LINK can automatically install devices for certain smart home systems, eliminating the need for duplicate programming.

Importantly, the LINK Control API also provides a safeguard, ensuring non-critical AV systems do not interfere with access to essential marine systems.



Information at your fingertips.

Imagine an app that extends the power of LINK across a vessel. It enables the monitoring and control of systems from anywhere in the world using a range of devices with the same simple and intuitive interface.

The LINK smartphone and multifunction display apps provide a unified view of the vessel, utilising the Simple View layout from LINKcloud. This ensures seamless control from onboard displays at the helm and portable devices such as smartphones.

LINK's powerful apps enable control over lighting, climate, shades, marine devices, geofencing, cameras and more, all from a single simplified view.

Uniquely, the LINK app and display app operate locally when on board, eliminating the need for an internet connection. The apps communicate directly with the local LINKbridge in real time, ensuring all information is up to date and commands are executed instantly.

LINK SECURITY

LINK provides an industry-leading suite of security utilities ensuring the vessel and its data remain secure at all times.



Keep watch.

Monitor up to 10 separate security cameras directly through the LINK smartphone or display apps.

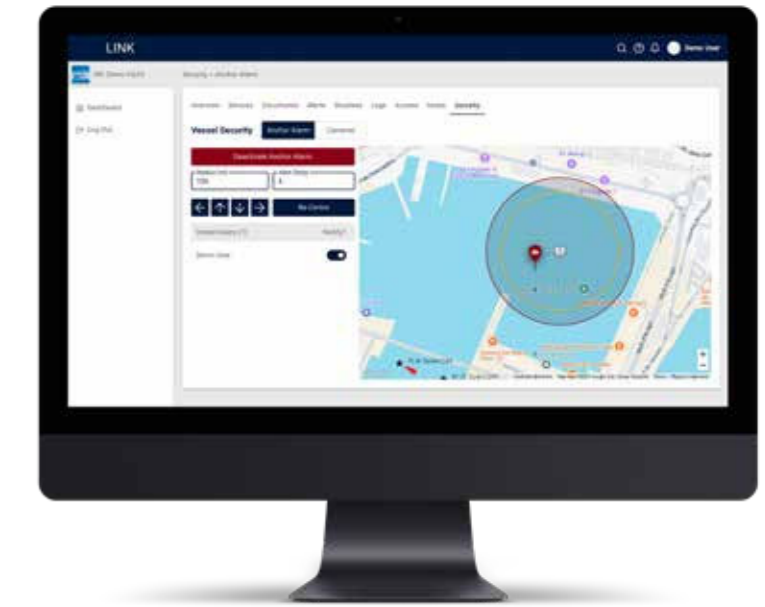
Since vessels use a variety of camera brands, LINK employs an open standard to integrate with the widest range of cameras, ensuring compatibility with existing security systems. Additionally, LINK actively monitors the cameras and can issue alerts if a camera stops functioning or loses its network connection.

Stay protected

LINK is specially designed to enhance the security and protection of vessels.

Many security systems installed on vessels fall short of the rigorous standards required for residential and commercial systems. Through partnerships with leading security brands and support for open standards, including KNX, LINK enables the installation of professional-grade security systems without being restricted to specific brands or camera devices.

These systems integrate seamlessly with LINK's powerful alerts and routines



GeoFencing.

LINK includes comprehensive geofencing functionality, ensuring the vessel's location is always known.

Define a boundary on the map around the vessel, and an alert is triggered if it moves outside this area. LINK's advanced notification technology allows specific vessel users or crew members to receive this alert, whether on board or across the globe. Additionally, LINK routines enable automatic responses to such alerts, such as disabling onboard systems and instrumentation to deter unauthorised movement of the vessel.

Multi-user functionality.

LINK is the only complete vessel management platform that is fully multi-user with advanced security options. While multiple individuals may require access to the vessel, not all need full monitoring or control capabilities. LINK provides granular control over who can access specific data and what actions they are authorised to perform, ensuring sensitive information remains secure.

Permissions can be customised for every user, allowing vessel-specific documentation, logs and other critical details to be selectively shared with individuals such as the captain or

maintenance team, while remaining hidden from others. This flexibility ensures that all aspects of the vessel's data are only accessible to the right people.

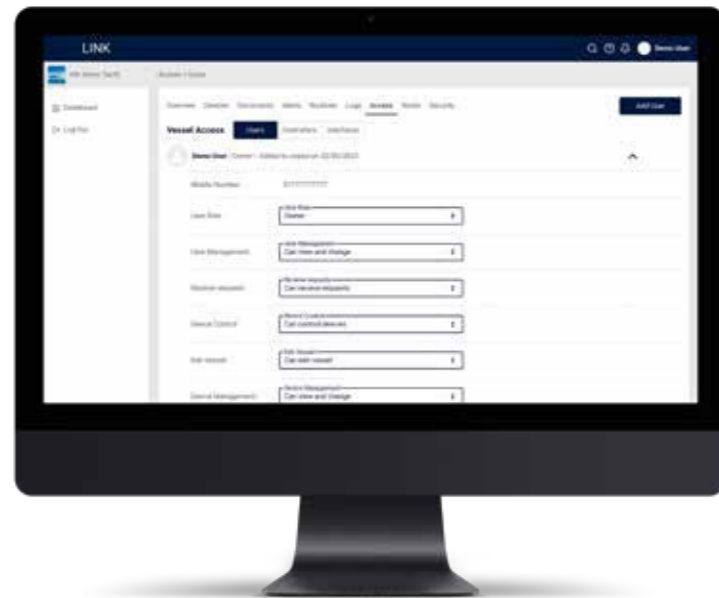
In addition to controlling access, LINK allows for the temporary disabling of vessel monitoring through LINKcloud. This feature can be used during maintenance or when remote functionality is not required. However, it is important to note that disabling monitoring also deactivates all remote features, including control and alerts, ensuring complete transparency in operations.

Granting monitoring access to boat builders or maintenance teams can ensure warranty issues and servicing needs are addressed promptly and efficiently. For example, location data can be restricted while still allowing access to essential technical information or system diagnostics. Additionally, LINK's remote control options ensure external support can be tailored precisely to the vessel's requirements.

LINK also features an innovative audit trail that records every action taken by any user. This includes the time, date, and location of the activity, creating an uneditible log

for full transparency and accountability. The audit trail provides peace of mind by ensuring every aspect of the vessel's operation is tracked and safeguarded. LINK even monitors for attempts to tamper with these records, further protecting the vessel's integrity.

With LINK, vessel management is both secure and efficient. Every detail of the vessel, from data access to remote functionality, is under control. This comprehensive system ensures peace of mind for owners, crews and management teams alike, making it an essential tool for modern vessel operations.



Comprehensive data security.

As both a UK and EU-based company, LINK is committed to adhering to the most stringent data protection measures. With years of expertise in cloud technologies, LINK has been built from the ground up with data security at its core.

Designed to be fully GDPR-compliant, LINK ensures that each user actively signs up for their account, providing full control over personal information. User accounts and all associated data can be deleted at any time, offering complete transparency and flexibility.

All personal and vessel data is stored and transmitted securely, protected by multi-layer security embedded directly into the LINK architecture. The LINKcloud was designed and developed in the UK by our in-house software teams. It operates on industry-leading, enterprise-grade hosting services, featuring full redundancy to ensure your data is always safeguarded.

In addition to robust data security, LINK aligns with the International Maritime Organisation's guidelines on Cyber Risk Management (MSC-FAL.1/Circ.3), far exceeding common practice in the industry. With LINK, you can trust that security and compliance are more than priorities—they are fundamental to everything we do.



LINK SUPPORT & ADMIN

Every element of LINK has been carefully designed to deliver seamless management of the vessel from a single platform. LINK includes a comprehensive set of tools, ensuring that everyone, from the boat builder to the crew and maintenance team, has access to the information needed to keep the vessel operating at its best.

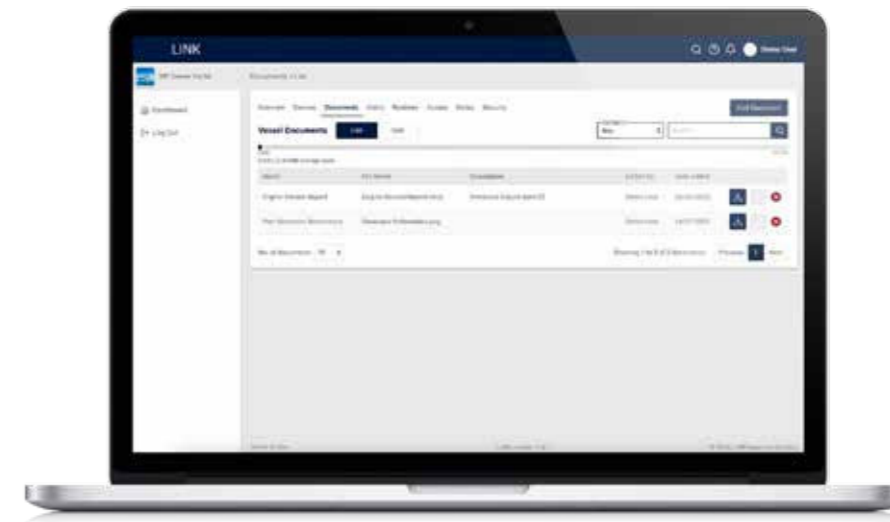
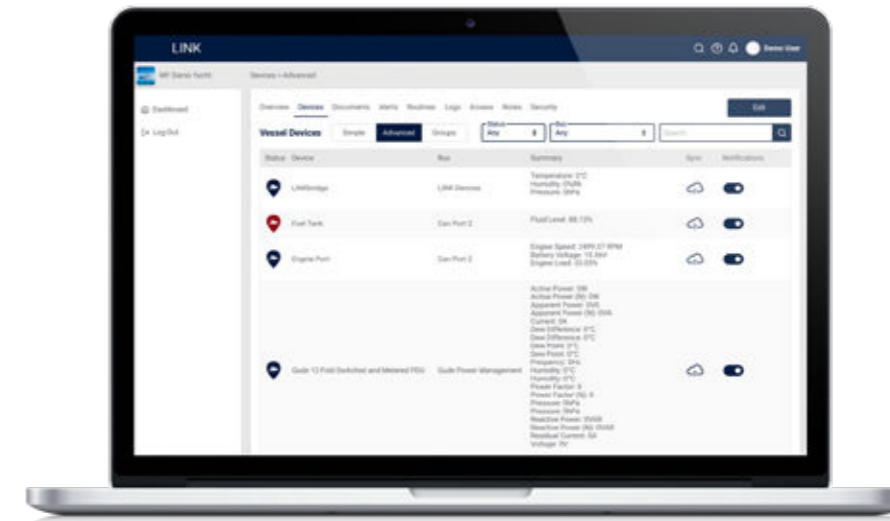


Easy Configuration.

LINK offers easy configuration, allowing designated team members, whether onshore management or onboard crew, to tailor the system to suit the vessel's needs without requiring complex programming. With the appropriate user rights, they can make adjustments to ensure the system works seamlessly for day-to-day operations.

For example, team members can create lighting scenes, adjust alert thresholds for tanks or batteries, and modify settings to match changing conditions. Every change is logged in LINK's audit trail, providing a complete and uneditable record of who made adjustments, when and from where.

LINK also provides flexible management of permissions, ensuring only authorised team members can access and modify specific settings. This balance of simplicity, control and detailed tracking ensures the system is user-friendly, secure and fully auditable, giving you confidence that the right tools are in the right hands.



Your virtual flightcase.

Quickly and efficiently access important documentation when it is needed most. LINK's built-in documentation storage enables electronic storage and organisation of all essential files.

Documentation can be assigned to categories and easily searched by name, ensuring quick retrieval of the required information. Permissions can also be customised on a per-user or per-document basis, safeguarding sensitive information and ensuring it is only accessible to authorised individuals.

Teams working on the vessel can upload their documentation directly to LINKcloud, ensuring the latest records are always available for reference.



Comprehensive Audit Capabilities.

LINK provides robust audit capabilities, delivering complete oversight of actions taken by crew and management teams. Every adjustment, command and acknowledgment is meticulously tracked and logged, offering unparalleled transparency for vessel operations.

The audit trail records all actions performed on the system, including changes to device settings, updates to routines and responses to alerts. Each log entry includes the user's identity, the time and date of the action and, where applicable, the user's location. This ensures a clear and unalterable record of who did what and when, safeguarding the integrity of vessel management.

Acknowledgments of alerts are also captured within the audit system, providing accountability for critical notifications. Whether a crew member responds to a low battery alert or a management team adjusts access permissions, every action is securely logged for future reference.

LINK's audit capabilities are particularly valuable for troubleshooting, performance reviews and ensuring compliance with operational protocols. In addition, attempts to tamper with audit logs are immediately flagged, reinforcing security and trust in the system.



Customisable Interfaces.

LINK's interfaces are fully customisable, allowing vessel administrators to tailor the system for each user based on their role and permissions. From captains and crew to management teams and engineers, interfaces are set up and assigned to ensure users see only what is relevant to them.

Administrators can configure LINKcloud dashboards and apps to display specific systems and data, providing advanced technical views for engineers or simplified interfaces for guests or less technical users. Permissions ensure users can only access the features they are authorised to control.

This approach ensures efficient, secure and user-specific interaction with the vessel's systems.



Remote monitoring and pre-emptive support.

LINK aims to provide complete visibility as though an engineer is on board, allowing for comprehensive shoreside assistance whilst cruising.

LINK provides data fragmentation, voltage and volume reports for each connected system, which can be used by your engineer or support crew to identify problems.

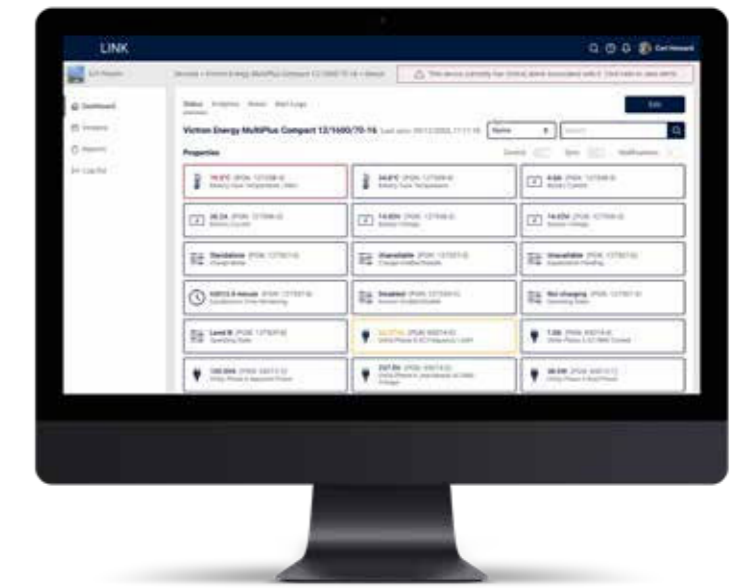
If a problem arises on your vessel, your authorised maintenance team will have access to large amounts of data ensuring they can effectively assist you and your crew. Moreover, some maintenance providers offer monitoring support services where, by using LINK, they will alert you or your crew if they detect any issues onboard, ensuring maximum safety and efficiency of your vessel.

Warranty and Support.

The LINKbridge is built to the highest standards of quality and durability, and it comes with a standard one-year warranty as part of your purchase. This warranty covers the hardware against manufacturing defects and ensures peace of mind during the first year of operation.

For those using a LINKcloud services package, the warranty is extended for the lifetime of the package. This lifetime warranty ensures that as long as the LINKcloud services package remains active, the LINKbridge hardware is fully covered. This provides long-term

assurance and reflects LINK's commitment to reliability and customer support. Whether operating under the standard warranty or the extended coverage provided by the LINKcloud services package, LINKbridge is backed by a dedicated support team to address any issues promptly, ensuring vessel systems continue to operate smoothly and efficiently.



LINKBRIDGE

Carefully crafted in the UK, every element of LINK's hardware is engineered to the highest standards. The LINKbridge is designed to be both robust and reliable, with a quality and finish that meets the demands of life onboard a vessel.



Engineered for Marine Performance

The LINKbridge is meticulously designed for marine monitoring and control, delivering dependable performance across a wide range of vessel types and sizes.

Developed by our in-house engineering team, it is precision-crafted from a single block of aluminium and finished with a military-grade hardened anodised black coating, ensuring both exceptional strength and long-lasting durability. This rugged construction is built to withstand the unique challenges of marine environments, including exposure to saltwater and fluctuating temperatures.

Its fanless design further enhances its resilience by keeping moisture and debris out, reducing operational noise, and minimising potential points of failure.

Seamlessly integrating with a vessel's existing networks and systems, the LINKbridge operates without the need for additional hardware, simplifying installation and reducing setup costs. Its performance is only limited by the compatibility of onboard devices, ensuring a tailored fit for virtually any vessel.

All the connectivity needed.

The LINKbridge delivers comprehensive and unrivalled connectivity options tailored to meet the diverse demands of vessels.

Designed to support a wide range of systems, it includes two Universal CAN ports that facilitate seamless integration with NMEA 2000, J1939, and Dometic CAN protocols, making it compatible with the most commonly used marine systems. Additionally, a dedicated NMEA 0183 port ensures backward compatibility with legacy equipment.

What sets LINKbridge apart is its two separate network interfaces (RJ45), offering flexibility in connecting IP devices. These interfaces enable monitoring of advanced systems while supporting critical protocols like KNX, ModbusTCP, Böning, and more, making it ideal for complex installations.

For enhanced cybersecurity, LINKbridge uses isolation technology to keep networks physically separate, ensuring sensitive alarm networks stay secure while being monitored, safeguarding critical vessel operations.

Digital switching and sensing.

LINK integrates seamlessly with a range of digital switching solutions from brands such as CZone, VeeConnect and Empirbus.

Additionally, the LINKbridge provides built-in digital switching functionality with four relay outputs. These can be configured for various uses, such as disconnecting domestic batteries when the vessel is inactive to conserve power. The relays can also be grouped and customised to match the vessel's hardware requirements, reducing the need for additional equipment.

The LINKbridge features four digital inputs for sensing triggers, including bilge or fire alerts. Any triggered inputs send immediate alerts through the LINK system, even when operating in HiberLINK low-power mode.

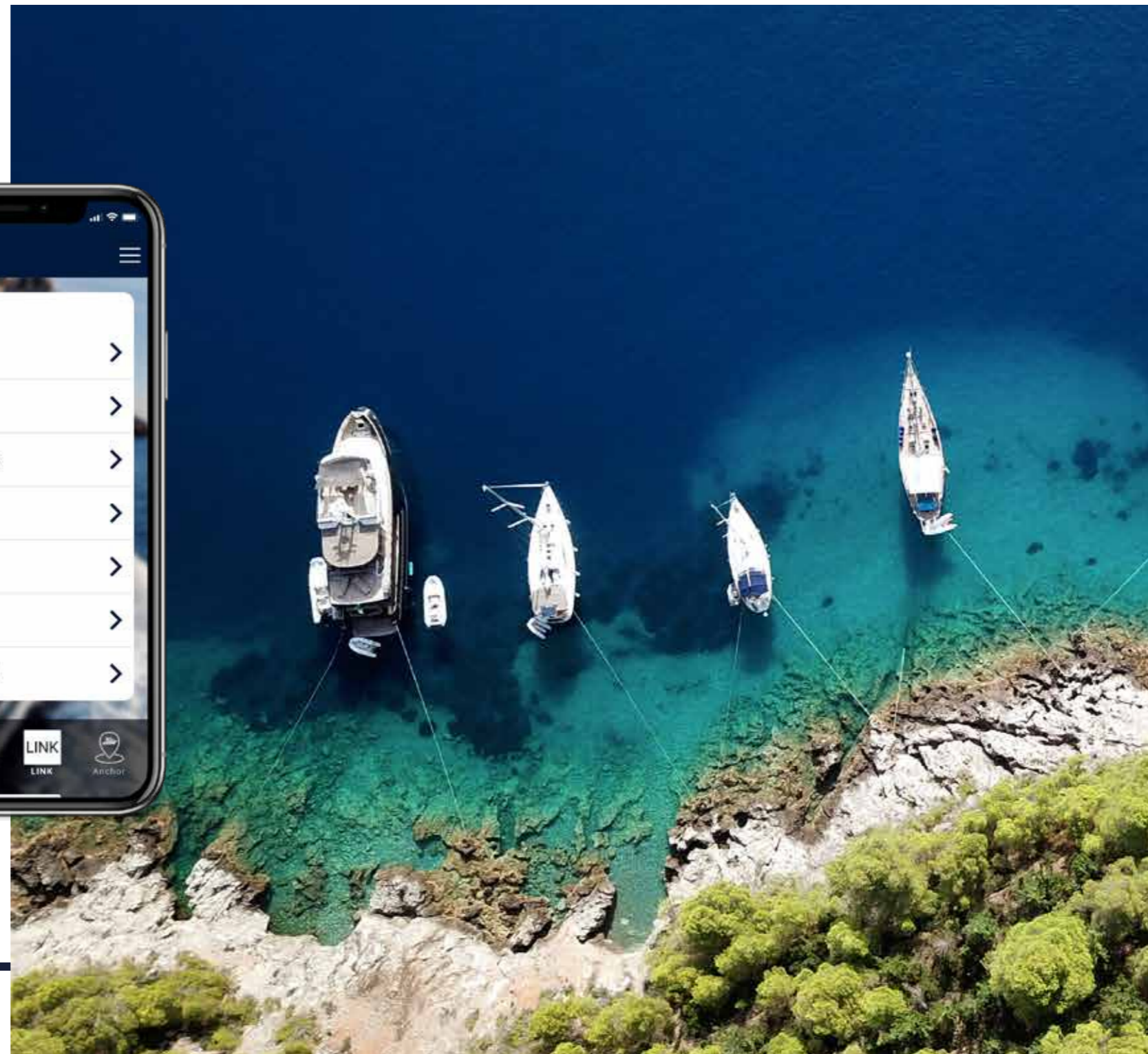
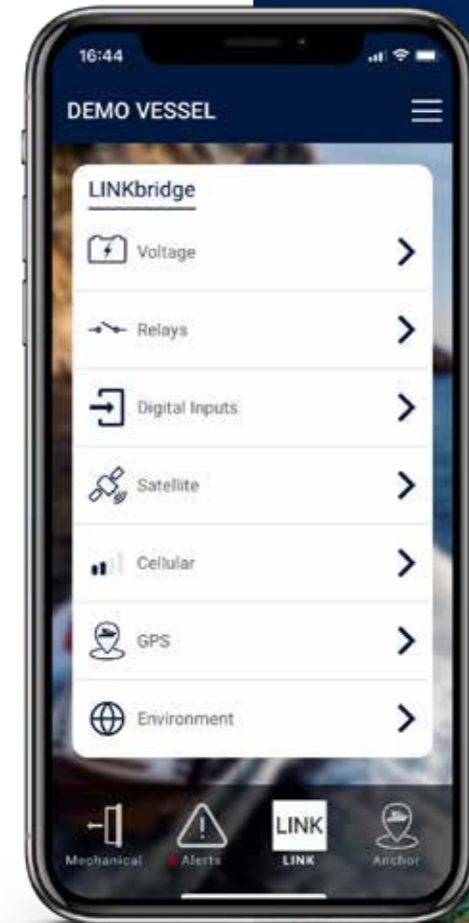
When the vessel is powered down, onboard sensors are often inactive. To maintain awareness, the LINKbridge includes its own GPS, accelerometer, and gyro. These enable it to detect knocks, bumps, or movement independently and provide continuous updates on GPS positioning.

Power and voltage monitoring.

LINKbridge simplifies installation by eliminating the need for a separate power supply. It can draw power directly from any of its CAN ports or the NMEA 0183 port, requiring only a simple connection to integrate with the vessel's systems.

Alternatively, LINKbridge can be powered via its auxiliary input port, supporting a dedicated always-on power source with 12–24 VDC input. This allows LINK to monitor systems even when the vessel is powered down. For enhanced energy efficiency, LINKbridge supports HiberLINK low-power mode, reducing consumption while maintaining essential monitoring capabilities.

LINKbridge includes three built-in voltage monitors, capable of independently monitoring domestic and machinery batteries within the 12–24 VDC range without additional equipment. Furthermore, LINK monitors the voltage across all connected buses, including the two CAN ports and the NMEA 0183 port, ensuring comprehensive oversight of the vessel's power systems.



Always connected.

LINKbridge ensures seamless communication, making data available at all times. Primary communication uses Ethernet via the vessel's internet for reliable transmission. If unavailable, backup options like 3G/4G or a built-in Iridium satellite transmitter can be activated with additional data packages.

LINK transmits data live, providing up-to-date readings from connected devices. This real-time reporting eliminates outdated information, keeping the vessel's monitoring accurate and immediate.

Whether operating on Ethernet, cellular, or satellite, LINKbridge ensures vessels remain connected, delivering continuous oversight and control.

Cloud Services.

The LINKbridge provides complete monitoring and control of vessel systems locally, right out of the box, ensuring seamless functionality while on board.

For remote access and integration with LINKcloud, the LINKbridge enables real-time monitoring, alerts and control from anywhere in the world. This ensures vessel systems remain fully accessible and manageable, whether on board or ashore, delivering comprehensive oversight and operational flexibility.

To explore the full capabilities of LINKcloud, contact your local LINK reseller for more information.





LINK

For more information or to schedule a demo:

Visit: www.linkconnected.com

Email: info@linkconnected.com